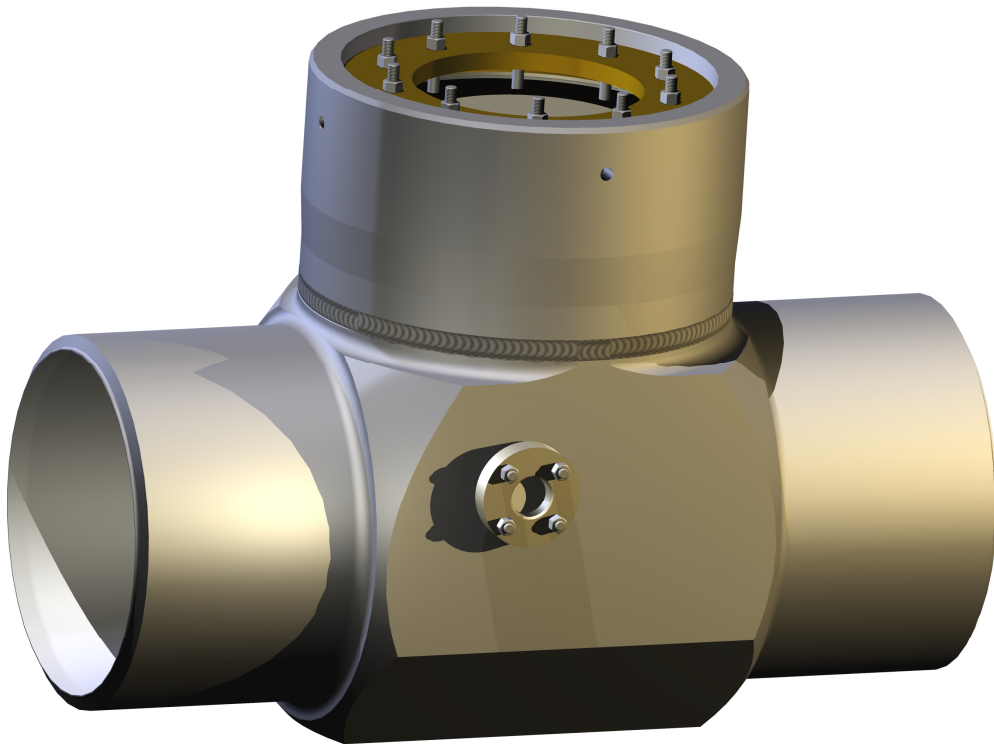


High pressure check valve type SWC
High pressure tilting disc valve type SWT



Swing check valve Type SWC

1. Application

The swing check valve SWC is a heavy duty shut off device, developed for feed water- and steam lines in high-pressure boiler- and pump systems. The valve opens automatically caused by the flow of the medium and shuts again due to the gravity effect of the free swinging plate and the changing of the medium flow direction. Thanks to the glandless valve shaft, a trouble-free and simple operation is guaranteed. Furthermore the absence of a shaft gland avoids any leakage. The check valve is pressure sealed. The seat and disc surface are stellited.

2. Available connections

Fabricated with welded ends (as shown in the drawing) also other configurations can be supplied. i.e. flanges, one side with welded ends and the other side with flanges, threaded end for cramp socket-connection, with minimum flow stud up stream of the valve disc and relief nozzle downstream of the valve plate. Also special requirements are considered.

3. Construction and Operation

The check-valve body is made out of solid forged steel. The wall thickness is designed for maximum pressure rating and temperature up to 650°C. The disc is mounted in the disc-lever with little axial and radial gap and secured by screw nuts. The disc-lever can swing freely on the shaft. The movable parts of the disc are fitted separately from the sealing parts. After tightening, the screw is secured and presses the disc firmly against the four-parted thrust ring thus protecting against slipping. The cylindrical pin prevents a horizontal displacement of disc. The body is pressure sealed.

This construction guarantees that the valve disc fits firmly even when no pressure is acting, also in a horizontal and vertical piping, where as in vertical installation it must be made certain that the flow is in the direction from bottom to top. The welding of the valve and heat treatment of the seams may be carried out without removing the internals. The check valves may be pickled without harming the internals.

